



Ross Sheppard



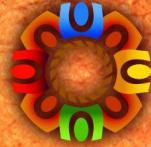
HIGH SCHOOL

Grade 10 → 11

IB Transition Information Night

Wednesday, March 13, 2024

5:30-6:30 p.m.



EDMONTON PUBLIC SCHOOLS

**First Nations,
Métis, & Inuit
EDUCATION**

**We acknowledge that we are
on Treaty 6 territory, a traditional
meeting grounds, gathering place,
and travelling route to the Cree,
Saulteaux, Blackfoot, Métis,
Dene and Nakota Sioux.**

**We acknowledge all the many
First Nations, Métis, and Inuit
whose footsteps have marked
these lands for centuries.**

IB Mission Statement

The International Baccalaureate aims to develop **inquiring, knowledgeable** and **caring** young people who help to create a better and more peaceful world through **intercultural understanding and respect**. To this end the organization works with schools, governments and international organizations to develop challenging programmes of **international education** and **rigorous assessment**. These programmes encourage students across the world to become **active, compassionate** and **lifelong learners** who understand that **other people, with their differences, can also be right**.



Diploma (“Full”) or Certificate (“Partial”) IB

Diploma

a well-rounded approach:
taking 6 IB subjects plus
the core

Certificate

as many or as few IB courses
as you choose: follow your
passion, strengths, and plans
for the future!

Many students start as “full” IB in grade 10 and then choose what to continue in as they learn about their interests, passions, and strengths.

Ross Sheppard



HIGH SCHOOL



The IB Diploma Programme

Group 1

English A: Literature (HL)
(including English Literature 35)

Assessment in 6 areas of study:

- 3 subjects at higher level (HL)
- 3 subjects at standard level (SL)

Group 2

French B (SL)
Chinese B (SL/HL with permission)
Chinese ab initio (SL)
Spanish ab initio (SL)

Group 4

Biology (HL)
(including Biology 25)
Chemistry (SL)
(including Chemistry 25)
Physics (SL)
(including Physics 25)



Group 6

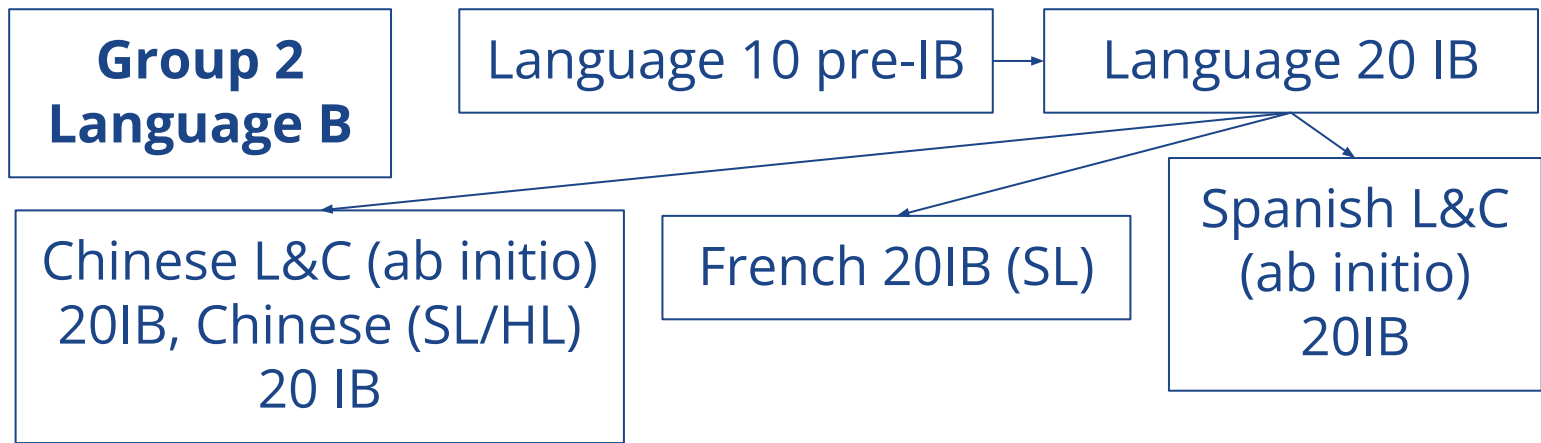
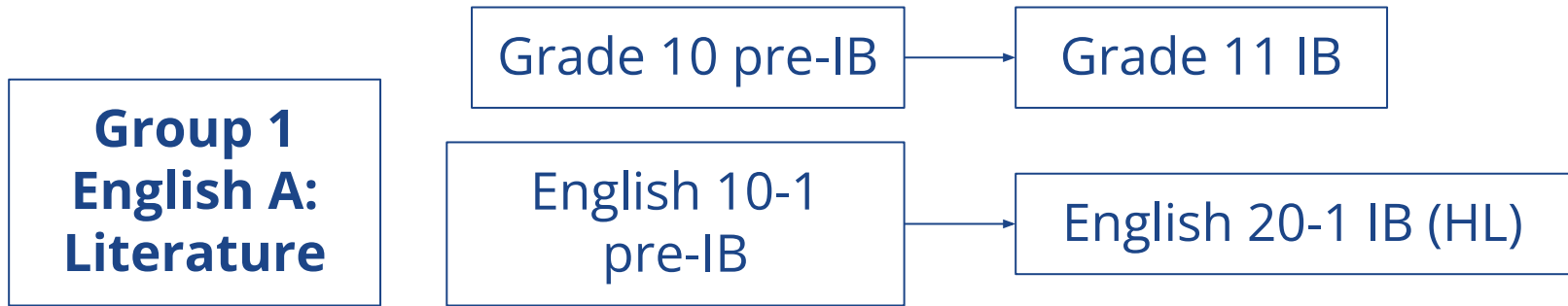
Visual Arts (SL/HL)
Music (SL): by request only

Group 3

History (HL)
(including Western World History 30)

Group 5

Mathematics Analysis & Approaches
(SL/HL with permission)



Grade 10 pre-IB



Grade 11 IB

**Group 3:
History of
Europe**

Social Studies
10-1 pre-IB



Social Studies 20-1 IB
(History of Europe HL)

Group 4: Science

- Biology HL is mandatory to complete the IB Diploma requirement of 3 HL subjects unless a student is taking Mandarin HL, Visual Arts HL, or another course HL with permission of the teacher.
- If a student is not taking a group 6 subject, they must choose a second science or additional language.

Grade 10 pre- IB

Grade 11 IB

Science 10
pre-IB

Biology 20 IB

Biology 25 IB

Chemistry 20 IB

Chemistry 25 IB

Physics 20 IB

Physics 25 IB

Ross Sheppard



Group 5 Mathematics

Grade 10 pre-IB

Grade 11 IB

Math 10C
pre-IB

Math 30-1 IB (SL/HL with
teacher permission)

Math 20-1
pre-IB

Group 6 Arts

Visual Arts 10
pre-IB

Visual Arts 20 IB (SL/ HL)

Students not taking a group 6 course can take a second science or an additional language.

Instrumental Music is offered only at the 20/30 level for IB and by request only.

Ross Sheppard



Grade 11 IB

Theory of
Knowledge 25

**IB DP
Core**

Extended Essay
(started in grade 11,
course taken in grade 12)

Creativity, Activity, and
Service (CAS)
(no registration needed)

Ross Sheppard

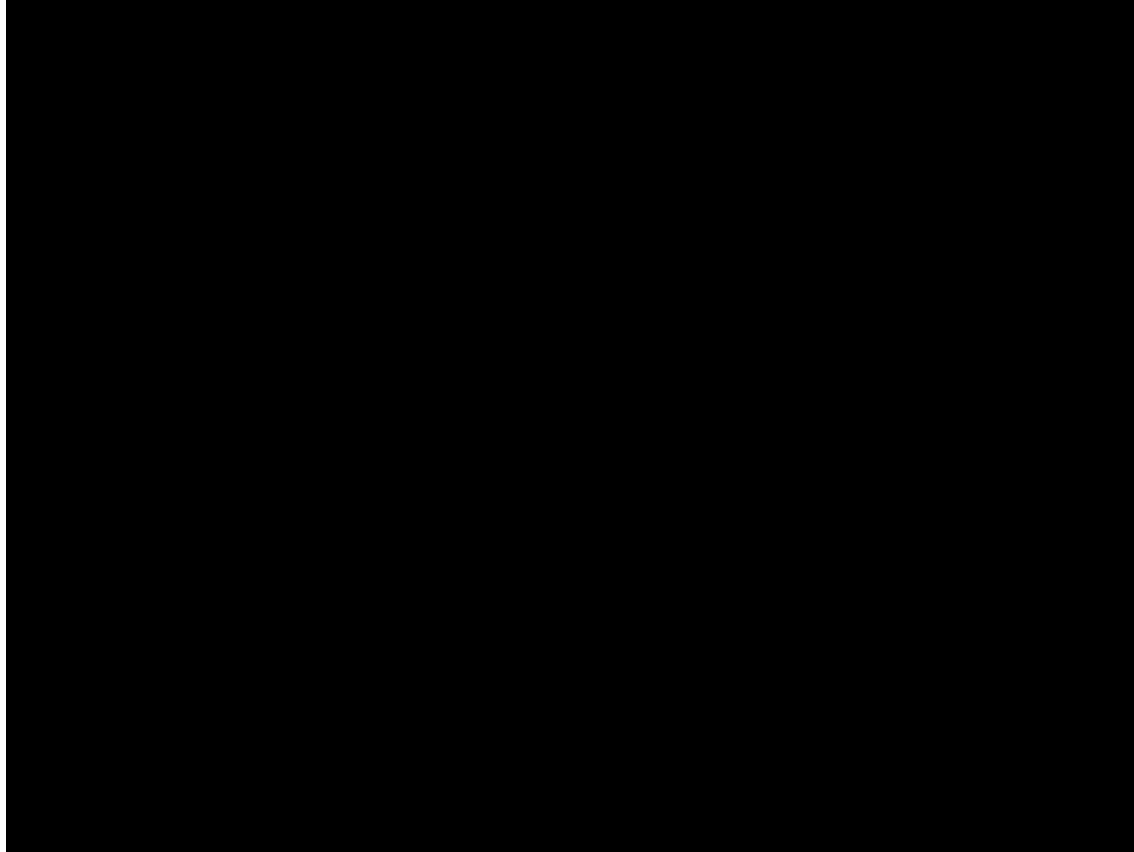


IB Diploma Requirements

- Score of at least 24 points (each subject /7 plus up to 3 for TOK/EE)
- CAS requirements are met
- No “N” awarded for any contributing subject
- Grade of D or higher in TOK and/or EE
- No grade of 1
- No more than 1 grade of 2
- No more than 3 grades of 3
- At least 12 points in HL subjects
- At least 9 points in SL subjects
- No penalty for academic misconduct from the Final Award Committee



University of Alberta



Benefits of the IB in Post-Secondary

- Better preparation for post-secondary
 - time management and organization
 - independent work but with the support of caring staff
 - type of assessment (lab reports, papers, research)
 - some material will be repeated for you and not for other students

Benefits of the IB in Post-Secondary

- Possible early full and final admission: IB Diploma (full IB) students based on predicted grades

IB Result	Percent Equivalent
7	98%
6	90%
5	82%
4	73%
3	55%
2 or 1	Not accepted for admission

- Dual admission opportunities
- IB specific scholarships
- Possible transfer credit

University	Possible University Transfer Credits Offered* <i>*Universities usually have a minimum grade students must receive to obtain transfer credits.</i>
U of A	Biology HL (3), Chinese ab initio SL/Chinese BSL/HL (6), English HL (6), French SL (6), History HL (3), Physics SL (3), Visual Arts HL (6) + Open Elective for TOK/EE/CAS (3)
U of C	Biology HL (3), English HL (3), History HL (6), Visual Art HL (6), plus Open Electives to equal a total of up to (30) for a full IB Diploma
UBC	Biology HL (8), Chinese HL (6), English HL (6), History HL (6), Math Analysis and Approaches HL (6), Physics SL (3), TOK (6), Visual Arts HL (6)
U of T	(1) per HL exam with a minimum grade of 5

Will there be more work? Is it harder?

- Yes, more so in grades 11 and 12. You need time to develop the skills for which IB is famous.

Will my marks be lower in IB?

- You are assessed on Alberta curriculum for Alberta and IB curriculum for IB (two marks).
- Alberta marks should be the same.
- Sometimes, being with motivated classmates can keep marks high.
- If you can't keep up with work, marks may drop.

IB at Shep is a Community

- IB Diploma overnight field trip
- IB Discord Server and online events
- Student run IB notes sharing Drives
- IB students are encouraged, through CAS, to join clubs, athletics teams, and activities that they often do together
- IB students support each other



More Information

<https://rosssheppard.epsb.ca/academics/ib/>

- Videos: especially grade 11/12 and alumni
- Brochure and course offerings information
- IB Policies

Timetable
Shep Grad

IB WORLD SCHOOL



VIEWBOOK 2022-2023

service. WE A
exhibited in ot
environment tl
believes that z
kind, respectf
held within the
LeaderShep, z
reflective prac
to foster growt

The Ross She
Academics, At
around the ac
individual aspi
for all learners

(Or click the link on
the left side of
Shep's main
website page)



Questions?

Jennifer Gross: IB Coordinator

jennifer.gross@epsb.ca

Look for us in the newsletter, the **[T-Bird Times!](#)**

Thank you!

